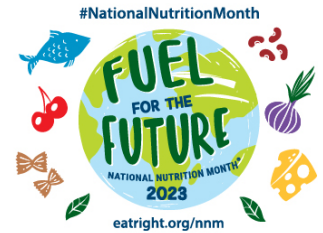


# Eat Right

Food, Nutrition and Health Tips from the Academy of Nutrition and Dietetics



## Eating Right With Less Salt

Most Americans are getting too much sodium from the foods they eat. And, the sodium in salt plays a role in high blood pressure, which is also known as hypertension. (Salt is the common name for sodium chloride.)

The *2020-2025 Dietary Guidelines for Americans* recommends less than 2,300 milligrams per day of sodium and even less for children younger than age 14.

Here are ways you can eat right with less salt:



### Focus on fresh foods

Many foods in their original form, such as fruits, vegetables, fresh meats, poultry, fish, dry beans, eggs, milk, yogurt and grains like rice are naturally low in sodium. Include these foods more often in meals and snacks.

### Eat processed and prepared foods less often

Highly processed and ready-to-eat foods tend to be higher in sodium. Eat these foods only occasionally or in smaller amounts – especially cheesy foods, such as pizza; cured meats such as bacon, sausage, hot dogs and deli or luncheon meats; and ready-to eat foods, like canned chili, soups and “instant” flavored noodles and rice.

### Cook more often at home

Enjoy home-prepared foods where you are in control of how much salt is added. Use little or no salt when cooking. Even if package instructions say to add salt to the water before boiling, it isn't required and can often be omitted. When using canned vegetables with salt added, be sure to drain and rinse the vegetables to reduce the amount of salt.

### Try new flavors

Skip the salt and try salt-free seasonings such as herbs, spices, garlic, vinegar, black pepper or lemon juice. Make your own salt-free seasonings by combining dried herbs and spices.

## Read food labels

Read the Nutrition Facts Label and the ingredients list to find packaged and canned foods lower in sodium. Compare the amount of sodium listed and select the product with the lower amount. Look for foods labeled “low sodium,” “reduced sodium,” or “no salt added.”

## Use caution with condiments

Foods like soy sauce, ketchup, pickles, olives, salad dressing and seasoning packets are high in sodium. Try low-sodium soy sauce and ketchup. Sprinkle only a small amount from a seasoning packet, not the entire amount.

## Allow your taste buds to adjust

Like any change, it can take time for your taste buds to adapt to less salt. Foods lower in sodium may taste differently at first, but over time it's possible to acquire a taste for foods that are lower in sodium.

## Salt-free Seasoning Blends

Boost the flavor of foods with salt-free herb and spice blends. Combine ingredients and store in a tightly covered jar. Rub or sprinkle them on food for added flavor.

- **Mixed herb blend:** Mix together ¼ cup dried parsley flakes, 2 tablespoons dried tarragon and 1 tablespoon each of dried oregano, dill weed and celery flakes.
- **Italian blend:** Mix together 2 tablespoons each of dried basil and dried marjoram, 1 tablespoon each of garlic powder and dried oregano and 2 teaspoons each of thyme, crushed dried rosemary and crushed red pepper.
- **Mexican blend:** Mix together ¼ cup chili powder, 1 tablespoon each of ground cumin and onion powder, 1 teaspoon each of dried oregano, garlic powder and ground red pepper and ½ teaspoon cinnamon.

---

**For a referral to a registered dietitian nutritionist and for additional food and nutrition information, visit [www.eatright.org](http://www.eatright.org).**

 **Academy of Nutrition and Dietetics**

The Academy of Nutrition and Dietetics is the world's largest organization of food and nutrition professionals. The Academy is committed to improving health and advancing the profession of dietetics through research, education and advocacy.

This tip sheet is provided by:

---

Authored by Academy of Nutrition and Dietetics staff registered dietitian nutritionists.

©2021 Academy of Nutrition and Dietetics. Reproduction of this tip sheet is permitted for educational purposes. Reproduction for sales purposes is not authorized.